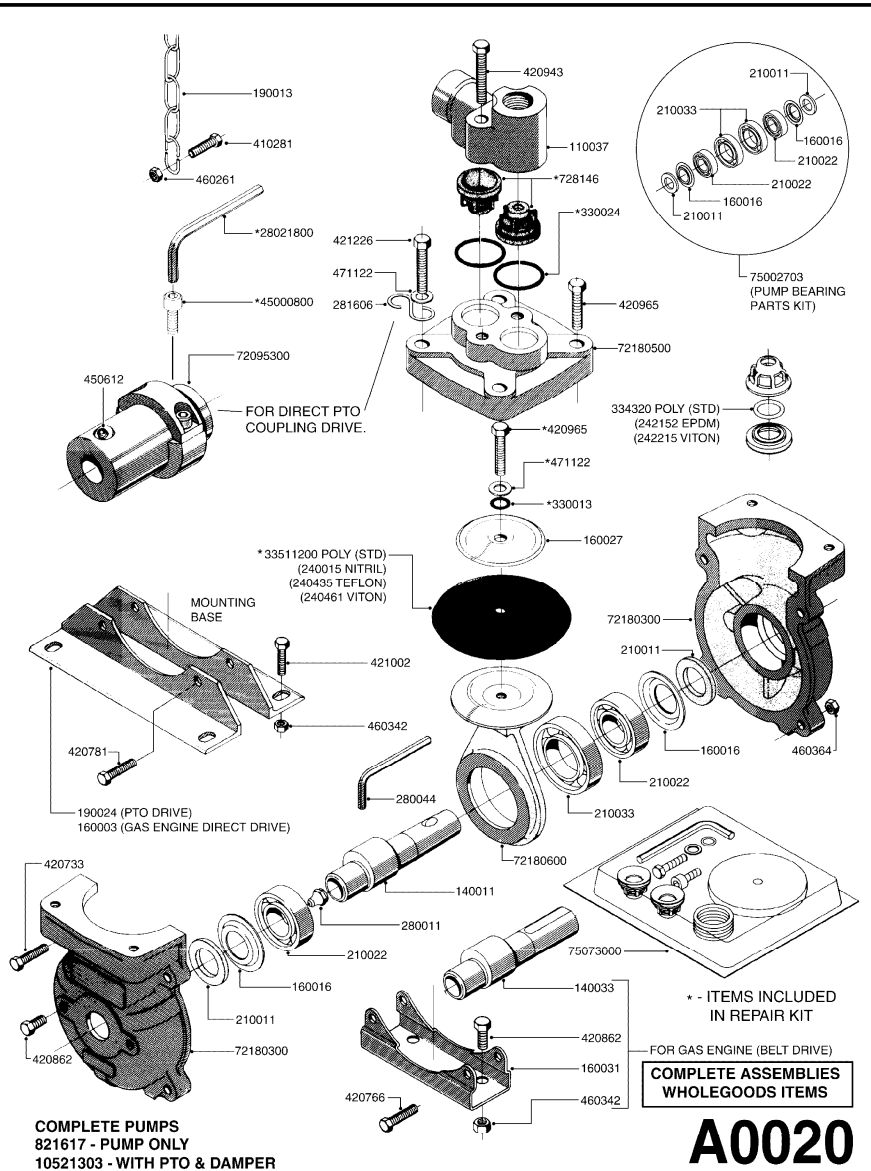


parts-n°	order qty	description
334320	1	O-RING 18X3 PUR
410281	1	SCREW M6 X 25
420733	1	M 8 X 40 MACH.SCREW BLACK
420766	1	SCREW HEX M8-45/22 SST A2 DIN931
420781	1	BOLT M8 X 50 STAINLESS
420862	1	M 10 X 15 MACH SCREW GALV
420943	1	M 10 X 50 MACH.SCREW GALV
420965	1	SCREW M10 X 40 STAINLESS
421002	1	SCREW M10 X 30 A2 MAGNI DELTA
421226	1	BOLT M10 X 45 use 421105
450612	1	POINTED SCREW M 10 X 16 .
460261	1	NUT HEX M6X1.00 LOCK DIN985 A2 SS
460342	1	NUT M10 PLAIN G304 SS
460364	1	M8 NYLOC NUT
471122	1	WASHER 10MM 20X10.5X2 SS G304
728146	1	PUMP VALVE D 35
821617	1	PUMP 503 W/FOOT P/SHAFT
10521303	1	PUMP 500 C/W PTO 540 RPM
28021800	1	KEY HEXAGON 8MM FOR M10
33511200	1	DIAPHRAGME 503/603 PUR 2006
45000800	1	BOLT ROUND M10X25
72095300	1	COUPLING 1 3/8' X 25 PAINTED



parts-n°	order qty	description
72180300	1	PUMP CASING 503 + MM BOLTS
72180500	1	DIAPHRAGME COVER 503 PAINTED
72180600	1	CONNECTING BAR 503/603 W. BOLT
75002703	1	PUMP BEARING KIT, 500/503/600/603
75073000	1	PUMP KIT 503 MM 06